

Energy Nexus: Wearable Art

Tanji Lydia^a, Wong Gloria^b, Yuan Guoxiang^c, Cheng Yuki^d & Lam Sam^e

^aMember, World Shibori Network, Email: ltanji@comcast.net

^bCurator, The Hong Kong Polytechnic University, Institute of Textiles and Clothing,
Email: tcgloria@polyu.edu.hk

^cAssociate curator, The Hong Kong Polytechnic University, Institute of Textiles and Clothing,
Email: vogue@126.com

^dAssociate curator, The Hong Kong Polytechnic University, Institute of Textiles and Clothing,
Email: tcyuki@inet.polyu.edu.hk

^eMarketing Manager, Pao Yue-kong Library, The Hong Kong Polytechnic University,
Email: lbsam@polyu.edu.hk

Summary

Energy Nexus: Wearable Art is an invitational exhibition of works by international professional designers, artists, and professors, who transform fibers and other materials into wearable art. The range of wearable art runs from the functional to the conceptual, combining creative expression with material manipulation, fiber art, and the latest technology. This art-oriented exhibition celebrates the vibrant variety, and interplay between new explorations and traditional textile techniques: the silhouettes and the surface textures; and the reflection of the artists' views ranging from history, society, philosophy to beauty, as well as sustainability issues in our changing environment, all of which invites communication between artists and audience.

1. Exhibition information

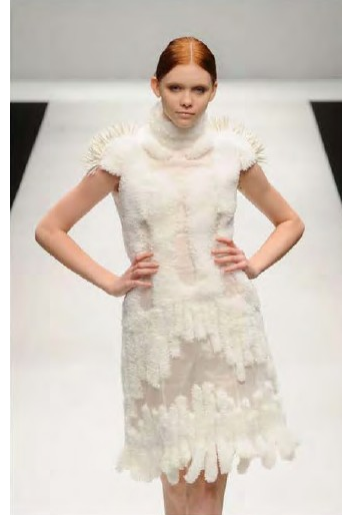
Venue: Exhibition Hall, Pao Yue-kong Library, The Hong Kong Polytechnic University.
Period: 22 December 2011–18 January 2012.
Catalog ISBN: 978-962-367-743-1.

2. Artists

Choi, Wing (Hong Kong). *Revolutionize Feminine Images into Body Shape*.
Fan, Chun Pang Stephen (Hong Kong). *Surface and State : From Year 2010 to Present*.
Hali, Philomena (Australia). *"Lunar Shadows" series*.
Haraguchi, Ryoko (Japan). *Kakishibu Dye (Utsukushii Nuno+ Tamashii No Nuno)*.
Hau, Ray (Hong Kong). *Meta-the-Meta*.
Hauptli, Ellen (USA). *Chevron Pleated Dress with Frostin*.
Ikeda, Rin (Japan).
Jain, Poornima (India). *Tribal*.
Jiang, Kinor & Xu, Rui (China). *Floated Ichthyolite*.
Kong, Fanfan (China). *My Recycling of 2010-Puzzl*.
Leung, Dad-Ming Ameber (Hong Kong). *Tea time – The Silver Teapot*.
Leung, Debbie (Hong Kong). *Sumi Poncho – Yin Yang Series*.
Leung Ka-Chun (Hong Kong). *Travel*.
Luximon, Ameersing & Zhang Yifan (Hong Kong). *Bridge*.
Mah, Chere Lai (USA). *Two Sculptural Ruffs*.
Murase, Hiroshi (Japan). *Stainless Sputtering Shibori*.
Ng, Haze (Hong Kong). *Mortal Immortality*.
Osuka, Aya & Nakanose. Chiaki (Japan). *Divinity ~will steal your breath away~*.
Pak, White (Hong Kong). *Knitted Sculpture Experiment*.
Qiu, Haisuo (China). *《如意我文》系列 - 四季如意*.
Schey, Barbara (Australia). *Colours of the "Red Centre" of Australia*.
Shin, Jooyoung (Hong Kong). *Inlaid with Desire*.

Soucie, Katherine (Canada). *Brun*.
Wang, Wenjuan (China). *Go Across*.
Wong, Gloria (Hong Kong). *Deconstructed Qipao*.
Yu, Wanning (China). *Evolution*.

3. Sample pictures from the exhibition



Osuka, Aya & Nakanose. Chiaki. *Divinity ~will steal your breath away~*.



Soucie, Katherine. *Brun*.



Ng, Haze. *Mortal Immortality*



Hauptli, Ellen. *Chevron Pleated Dress with Frostin*.



Luximon, Ameersing & ZHANG Yifan. *Bridge*.



Wong, Gloria. *Deconstructed Qipao*.



Jiang, Kinor & Xu, Rui. *Floated Ichthyolite*.



Haraguchi, Ryoko. *Kakishibu Dye (Utsukushii Nuno+Tamashii No Nuno)*.



Leung, Debbie. *Sumi Poncho – Yin Yang Series.*



Kong, Fanfan. *My Recycling of 2010-Puzzl.*



Jain, Poornima. *Tribal.*



Shin, Jooyoung. *Inlaid with Desire.*